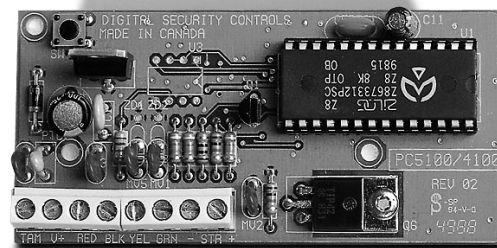


DSC® Power832® Security System

PC5100

2-Wire Addressable Device Interface Module

- For PC5010 v2.0 and PC5015 v2.2 and higher
- Connect up to 32 addressable devices (1/zone)
- Maximum 170 mA total loop current
- Simplifies wiring for fast and efficient installations
- Devices can be home-run, t-tapped or daisy chained
- Long runs can be split into two or more loops
- PC5100 can be installed anywhere on Power832 KEYBUS up to 1,000' (305 m) from main control panel
- Built-in tamper switch
- Easy device enrollment process via any system keypad...
 - enter module enrollment programming section
 - enter 2 digit number for the zone that the device is to occupy
 - enter device's factory issued 5 digit serial number
 - exit program



6 Addressable Devices Available NOW!

AMA-100... Acuity Glassbreak Detector



- exceptional microphone frequency range provides excellent sound capture at low sound levels and distances up to 25 ft (7.6 m)
- detects breakage of all common types of glass including plate, wired, tempered and laminated
- built-in tamper switch
- AFT-100 glassbreak tester available

AMS-220 Series... Photoelectric Smoke Detectors



- AMS-220... 2-wire smoke detector
- AMS-220T... includes 135°F (57°C) fixed temp. heat sensor
- red solid-state LED indicator light
- magnet-activated sensitivity test switch
- continuous self-test for low sensitivity
- manual and programmable scheduled tests for low sensitivity and alarm operation
- locking/non-locking mounting plate

AMB-300... Passive Infrared Motion Detector



- multi-level PIR signal processing
- dual element low noise sensor
- high level static & transient protection
- high white light & RF immunity
- temperature compensation
- tamper switch
- 4 lenses available
- up to 50' L x 60' W (15.2 x 18.3m) coverage

AMB-600... Dual Element Pet Immune PIR



- multi-level PIR signal processing
- two dual-element low noise sensors
- high static and transient protection
- high white light & RF immunity
- temperature compensation
- tamper switch
- 40' L x 50' W (12.2 x 15.2m) coverage

AMB-500... Ceiling Mount 360° PIR



- ceiling mount
- quad element low noise PIR
- high white light & RF immunity
- multi-level signal processing
- temperature compensation
- up to 40' Ø (12.2m) coverage

AMP-700 Series... Contact Modules



AMP-700... magnetic door/window contact with built-in tamper switch

AMP-701... 3 inputs to monitor external NC alarm, tamper, and trouble contacts

AMP-702... NO supervised input contact. EOL supervised for fire applications