

SMOKE DETECTOR RID-235 (R)

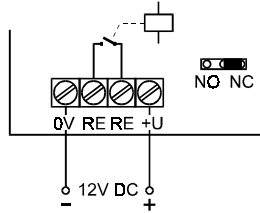
v.2.1

Description:

This detector is determined for FIRE protection. Built-in ionization chamber reacts to all types of smoke emitted by fires. Detector can cover indoor area up to 70m² (depends on shape of the room). Built-in piezo siren generates an acoustic warning in the case of emergency.

The **RID-235** is stay-alone option of detector without relay output. It is suitable for basic protection of residence. It is powered with 9V battery, stand-by consumption 0.015mA (build-in battery condition check feature).

The **RID-235R** is equipped with output relay and it is externally powered. There are four terminals inside this detector. Two of them are for external voltage 12VDC, the second pair named RELAY is connected to output relay contacts. Function of this relay can be set with a jumper on the board. If the jumper is in **NC** position you get normally closed output and **NO** position provides normally open output.



Installation:

The detector should be installed on the ceiling. The distance from walls (A) should be 0.4m as a minimum. The maximum working distance (B) is 5m. Detector should not be installed in the place with bad air circulation. It should not be also installed close to any fan, heating or fluorescent lamp. Detector is not suitable for rooms with high rate of humidity. Consider, that it is also sensitive to cigarette smoke.

Maintenance:

This detector does not require any special care. We recommend to clean dust from the housing with dry cloth from time to time. You can test the detector function by testing button (press it and hold for about 20seconds). The stay-alone option checks the voltage of its battery. If the battery is low, detector informs about that with short acoustic signals.

Specifications:

used method:	ionization chamber Am ₂₄₁ , 3kBq
built-in siren:	95dB
working temperature:	-10°C to 50°C
dimensions:	105 x 85 x 35mm
voltage:	RID-235 battery 9V RID-235R external 12VDC/15mA output relay max.0.5A/60V

made in CZECH REPUBLIC

AK505A